

1-Chloromethyl naphthalene MS

Product Description: 1-Chloromethyl naphthalene

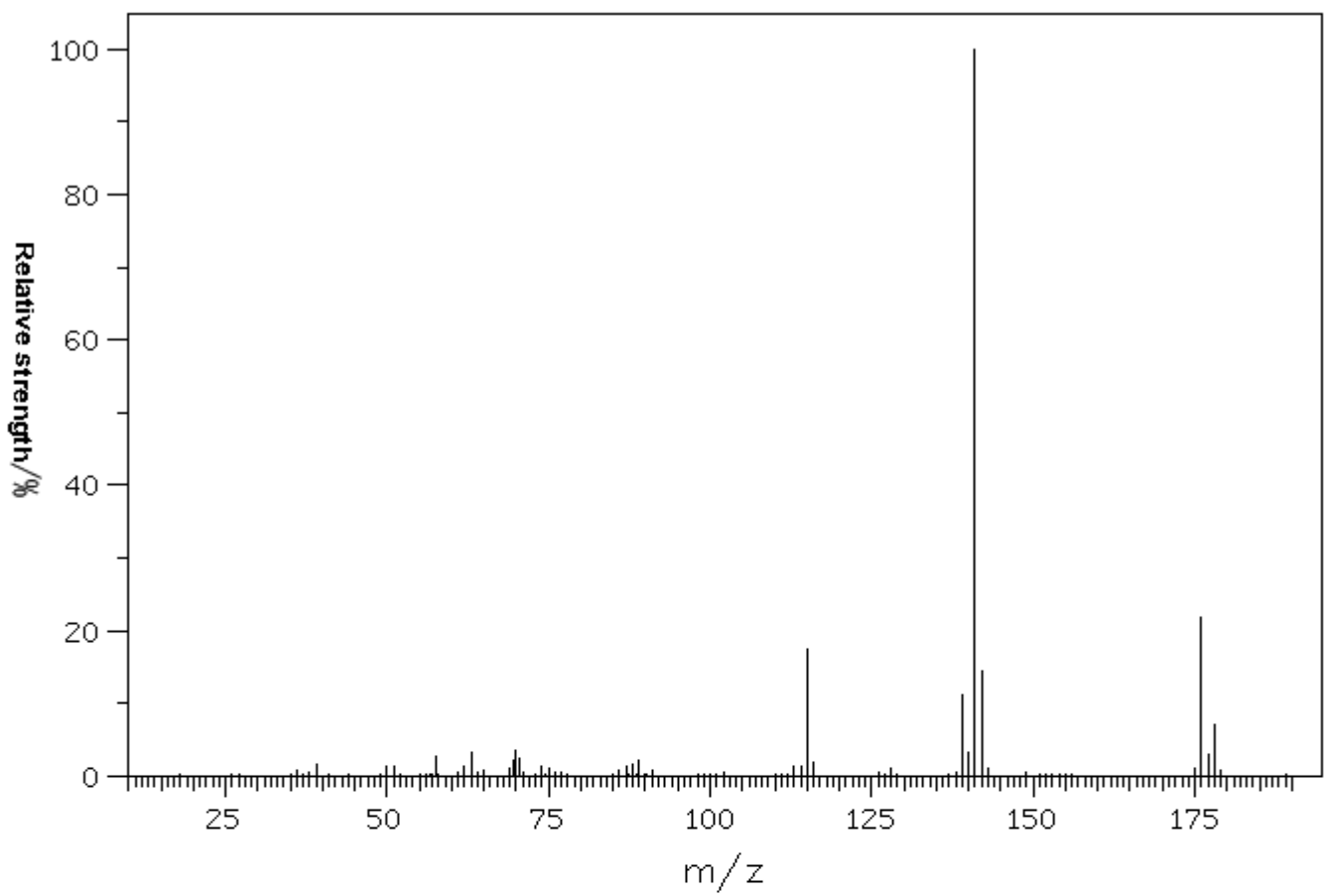
CAS No 86-52-2
Molecular Formula C₁₁H₉Cl

Molecular Weight 176.64

Supplier Ji'Nan Da Data Industrial Base,
2222 190 meters southeast Lixia
District, Jinan, Shandong, China,
250101
Office Tel: +86 15688411080

Emergency Telephone Number 008616588411080

E-mail address info@orientred.com



Source temperature: 280°C

Sample temperature: 180°C

Electronic energy: 75eV

39.0	1.6	113.0	1.3
50.0	1.2	114.0	1.2
51.0	1.3	115.0	17.4
57.5	2.8	116.0	1.8
62.0	1.3	128.0	1.0
63.0	3.2	139.0	11.2
69.0	1.1	140.0	3.3
69.5	2.1	141.0	100.0
70.0	3.4	142.0	14.4
70.5	2.5	143.0	1.0
74.0	1.2	175.0	1.0
75.0	1.0	176.0	21.9
87.0	1.2	177.0	3.0
88.0	1.5	178.0	7.2
89.0	2.2		